



**BANBROS ENGINEERING PVT. LTD.**

The Precision Measurement People

# COMPUTERIZED UNIVERSAL TESTING MACHINE FRONT OPEN WITH HYDRAULIC GRIP

- *VALUE*
- *VERSATILITY*
- *PERFORMANCE*



## **BCF-UTM- HG-1200/1500**

**DESCRIPTION: -**

This is hydraulically controlled servo Universal Testing Machine. The main advantage of this servo system is a test can be conducted by giving a specific load rate or elongation rate. The oil flow is controlled by the close loop feedback from the load elongation system. Test with specific load steps can also be conducted.

**FEATURES: -**

Universal Testing Machines have a wide range of applications and number of materials, metals in different form and shapes can be tested for variety of tests like Tension, Compression, Transverse, Bend, Shear, Brinell Hardness etc. Special attachments are also available for testing of Flat Belts, Chain Links, Wire Ropes etc.

**LOADING FRAME:**

The base has a hydraulic cylinder at its center and two main screws at both ends. The middle cross head is mounted on screws through main nuts. The middle cross head can be moved up or down through chain transmission and geared motor to adjust the initial tensile/compression clearance. Inside base of machine, hydraulic cylinder is set in which piston is placed on the piston, rests an assembly of upper, lower cross head and two columns. The individually lapped cylinder piston assembly ensures smooth axial force with minimum friction.

**CONTROL PANEL:**

Hydraulic circuit it consists of hydraulic power pack which has a directly driven radial plunger pump which gives continuous non-pulsating flow of oil pressure up to 250bar a pressure compensated needle type flow control valve is obtained with help of valves. Optionally this can be controlled from electronic system.

**LOADING RATE / STRAINING RATE CONTROL:**

This is superfine controlling system which controls loading rate / straining rate as per commands from electronic machine control system. FINE UTM Software can send loading rate / straining rate to electronic system for fully automatic testing.

**LOAD MEASUREMENT SYSTEM:**

Oil pressure in the main cylinder is also transferred to an electronic pressure transducer which gives proportionate signal to electronic unit. Both the motors for hydraulic operation and cross head motion are controlled by buttons on electronic control system and they have interlocked to prevent simultaneous working of motors. The electrical panel is housed in control panel. Displacement measurement is carried out by means of a rack and pinion on rotary encoder. Encoder signal is fed to electronic system to get displacement.

**OPERATION:**

Tension test is conducted by gripping the test specimen in the upper and middle cross head. Compression, Bending, Transverse, Shear and Hardness tests are conducted between the middle and lower cross head by using appropriate fixtures. The rapid adjustment of middle crosshead facilitates easy fixing of tensile / Compression specimens of different lengths.

Hydraulic controls are through hand operated valve, ergonomically placed for ease of control. Optionally valves can be controlled from electronic control system. Adequate safeties for over load and over travel are incorporated and emergency switch is provided.

**ACCURACY & CALIBRATION:**

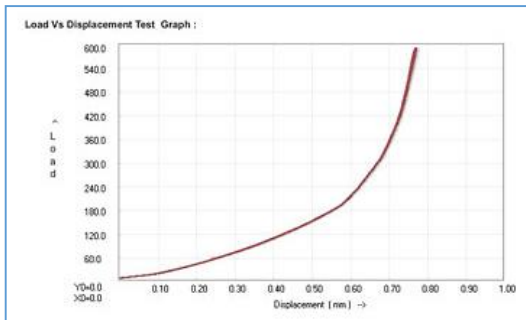
Every machine is calibrated in accordance with procedure laid down in BS-1610-1964 IS 1828-1991. 'Banbros' Computerized Universal Testing Machines comply with grade A of BS 1610-1964 and Grade 1.0 of IS 1828-1991. An accuracy of  $\pm 1\%$  guaranteed from 2% to 100% of capacity of the machine. In the computerized UTM, the computer is an integral part of the entire system and not just an ADD ON feature. This puts a lot of power and versatility into the hands of the operator and makes the system much more self-contained than usual, as it includes many functions usually only available as additional (often expensive) optional features.

**FEATURES OF BANBROS UTM SOFTWARE: -**

- Menu driven form system with colour graphs to compare sample test results
- Test details and reports are stored in database
- User programmable master test templates
- User can select test from master test Templates and can start similar test
- Load and Elongation is continuously displayed on screen
- Overload protection for machine by electronic control
- Tare Load and Reset Elongation facility available
- User selectable sample break detect condition
- Load rate and strain rate are also displayed while testing
- Unlimited Load rate and strain rate control steps
- With Load rate controller, user can hold the load on specimen for unlimited time
- With Load rate control, user can specify positive or negative Rate of Loading
- User selectable units for load and displacement (kg, k N, N, l b f, mm, cm, inch etc.) Results and graphs are automatically displayed accordingly
- On line display of Load and Displacement (Stress, Extension, Strain) etc. while test is conducted
- Provision of auto zeroing of Elongation at preload set by user
- User Programmable Reports. User can select Header, Footer, Specimen information, Dimensions, Test information, Test results, Static analysis as per his need
- Generated reports can be exported to PDF file and can be e-mailed
- If electronic extensometer is used then proof stress values from 0.1% to 1% can be determined
- Software will give alert to user to remove extensometer when load crosses .2% of Gauge length selected then proof load value is calculated. (With extensometer)
- Separate graph of extensometer and encoder is displayed
- Provision of calculation of Load and Elongation at yield, Peak load and Load at break, Yield stress, Ultimate stress etc.
- Special software for tensile, compression, bend, TOR steel and other test software as per customer requirements
- Available with load rate / Strain Rate / Controller.



Sample Colored Multigraph for test

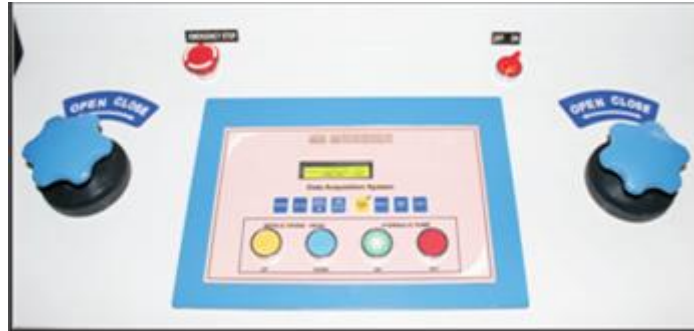


	Disp. at F1, Loading mm	Disp. at F1, Unload mm	Disp. at F1, Avg. mm	Disp. at F2, Loading mm	Disp. at F2, Unload mm	Disp. at F2, Avg. mm	Peak Load	Height at Peak Load mm	Height at Preload mm
1	0.619	0.622	0.621	0.602	0.607	0.605	592.5	0.599	1.376
2	0.619	0.621	0.620	0.602	0.606	0.604	592.72	0.599	1.369
3	0.619	0.621	0.620	0.601	0.606	0.604	592.2	0.599	1.369
4	0.619	0.621	0.620	0.602	0.606	0.604	591.5	0.599	1.368
5	0.618	0.621	0.620	0.601	0.606	0.604	592.36	0.599	1.369
6	0.618	0.621	0.620	0.602	0.606	0.604	591.52	0.599	1.368
7	0.618	0.622	0.620	0.601	0.606	0.604	592.98	0.599	1.367
8	0.618	0.621	0.620	0.601	0.606	0.604	591.6201	0.599	1.368
9	0.618	0.621	0.620	0.601	0.606	0.604	591.78	0.599	1.368
10	0.618	0.621	0.620	0.601	0.606	0.604	592.58	0.599	1.369
11	0.617	0.621	0.619	0.601	0.606	0.604	592	0.599	1.367
12	0.618	0.621	0.620	0.601	0.606	0.604	591.96	0.599	1.368
13	0.618	0.621	0.620	0.601	0.605	0.603	592.26	0.599	1.368
14	0.618	0.621	0.620	0.601	0.605	0.603	592.42	0.599	1.367
15	0.618	0.621	0.620	0.601	0.605	0.603	591.46	0.599	1.368

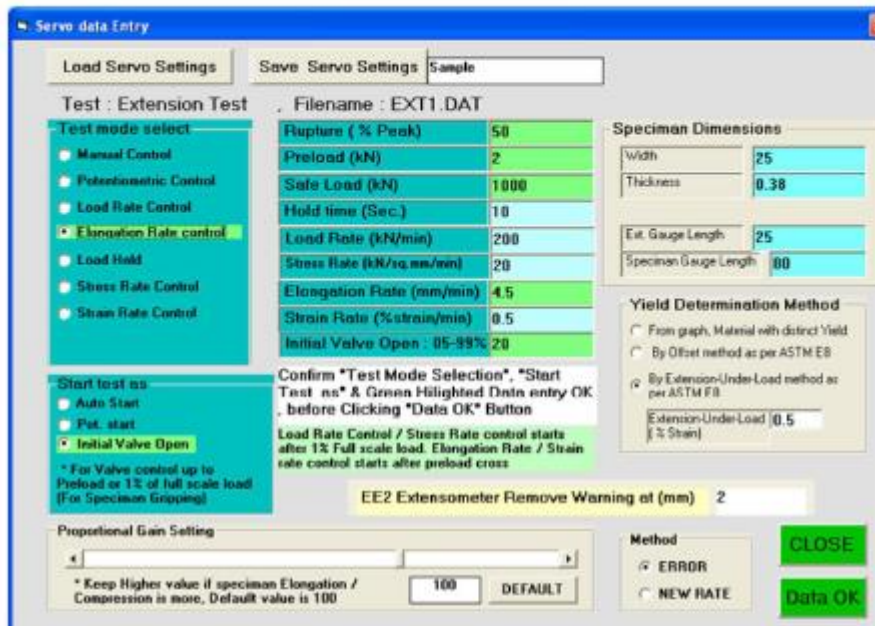
### A MICRO CONTROLLER-BASED MACHINE CONTROL SYSTEM: -

- Fullyfledged sealed membrane alpha numeric keyboard for data entry
- 16 x 2 Lines LCD Graphics display with backlit for displaying Load and Elongation of crosshead with bigger font size
- Load indicated with resolution of 0.01% of machine capacity for entire range
- Elongation is measured with resolution of 0.01 mm.
- Controller for load rate and strains rate control
- Auto detection of overload and over travel and specimen break. On detection of any condition hydraulic system is automatically turned off
- Tare load and Reset Elongation facility Peak Load and Elongation at Peak, Load at break
- Elongation at break, UTS, %Elongation, %reduction in area, Yield load etc. results for offline test
- RS232C interface for computer connectivity
- Built in Centronics parallel port / Serial Port for printer interface





SERVO TEST START . DATA ENTRY



This screen opens when you start "Servo Test" from main menu. ( For Servo Controlled m/c)

Test Related data Entries :

Safe Load (kN) , Preload (kN) , Rupture % Peak (15 - 85) entries same as standard test

Speciman Dimensions :

entries same as standard test

You can select Yield determination Method same as standard test

Servo Data Entry :

First You have to select Servo control Mode. ( Load Rate / Elongation rate etc.)

"Start test as" option is for initial gripping purpose. After preload control starts with selected rate.

Keep Initial Valve Open entry sufficient so that loading must start with this much valve open, as control will not start till preload.

After selecting "Servo control mode" , You have to fill green highlighted entries in given units.

You can save all Servo Data entry as some descriptive name . So as to recall same entries again.

( With "Save Servo settings" & "Load Servo settings" )

If required you can change Proportional Gain settings , or Method ( ERROR / NEW RATE )

Default Gain & Method settings will work for about all specimans.

Click on "Data OK" to go for Test Start with Online Graph.

**TECHNICAL SPECIFICATIONS:-**

Model No.	BCF-UTM-1200 HG	BCF-UTM-1500 HG
Measuring Cap. (kN)	1200	1500
Measuring Range. (kN)	0-1200	0-1500
Least Count (kN)	0.06	0.075
Load Range in kN with accuracy of Measurement $\pm 1\%$	24 to 1200	30 to 1500
Resolution of Piston movement (mm)	0.01	0.01
Max. tensile clearance at fully descended piston position	50 to 850	50 to 850
Maximum clearance for Compression test (mm)	0-850	0-850
Distance between columns (mm)	750	800
Piston Stroke (mm)	250	275
Maximum straining speed at no load (mm/min)	80	60
Power Supply	3 Phase 415 V 50 Piz A.C	
H. P. (Total)	4.0	6.5
Overall dimensions (Approx) (mm L x W x H)	2350 x 800 x 2700	2600 x 1000 x 3200
Weight (Approx in kg)	4500	7500

**STANDARD ACCESSORIES: -**

Model No.	BCF-UTM-1200 HG	BCF-UTM-1500 HG
<b>Tension Test JAWS For :</b>		
Round specimen dia (mm)	10 - 25	10-25
Round specimen dia (mm)	25-45	25-45
Round specimen dia (mm)	45-70	45-75
Flat specimen Thickness (mm)	0-22	0-22
Flat specimen Thickness (mm)	22-44	22-44
Flat specimen Thickness (mm)	44-65	44-70
Max. width for Flat specimen (mm)	70	75
<b>For Compression Test:</b>		
Pair of Compress Plates dia $\varnothing$ (mm)	160	180
<b>For Transverse Test:</b>		
Adjustment roller supports width (mm)	160	160
Diameter (mm)	50	50
With Max. adjustable clearance (mm)	800	800
Punch Taps of Radius (mm)	16	16
Radius (mm)	22	22

\* Banbros Reserves the rights of change in above specification due to constant improvement in design



**OPTIONAL ACCESSORIES: -**

- Load stabilizer for maintaining desired load
- Extensometer (Mechanical type)
- Extensometer (Electronic type)
- Printer, plotter, UPS
- Attachments for Brinell Test, Shear Test,
- 180 Bend Test Nut & Bolt Testing, Bend Re-bend etc
- Attachment for testing of wire ropes

**Notes: -**

- Special attachment for specific test requirement can also be supplied
- Load stabilizer should be ordered along with machine itself.

**Insert to hold the Round Specimen of Size (in mm.)  
mm.)**

**Insert to hold the Flat Specimen of Thickness (in  
mm.)**



Dia 10-25 1 set  
Dia 25-45 1 set  
Dia 45-70 1set



0-22 1 set  
22-44 1 set  
44-65 1set  
Max. width for  
flat specimen  
70 mm

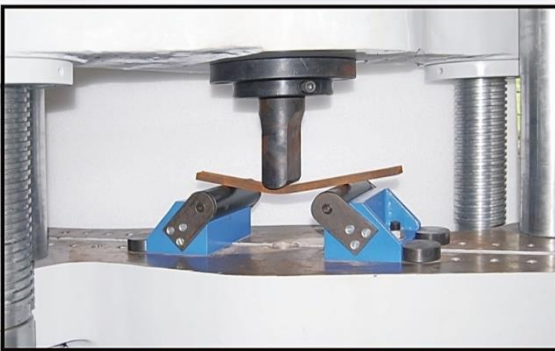


## Compression test



Pair of compression plates  
dia 160 mm

## Transverse test



Adjustment roller supports width (mm) - 160  
Diameter (mm) 50  
With Max. adjustable clearance (mm) - 800  
Punch Taps of  
radius (mm)- R 16,R 22 1 No. each

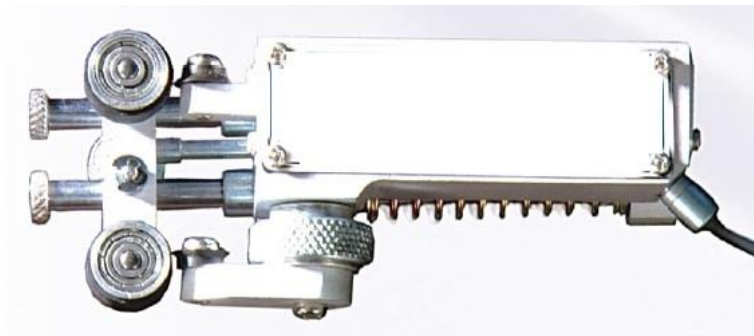




# Extra Accessories

## Electronic Extensometer

- This instrument is to be used on Tensile or Universal
- Testing Machines to find out values of "PROOF STRESS", "YOUNG MODULUS" & "Materials strain
- The measuring range is upto 3 mm & resolution is 0.001 mm.
- Standard two fixed gauge lengths of 25 & 50 mm is provided.
- The measurement accuracy satisfies all requirements of "Class -1 as per IS 12872-1990"



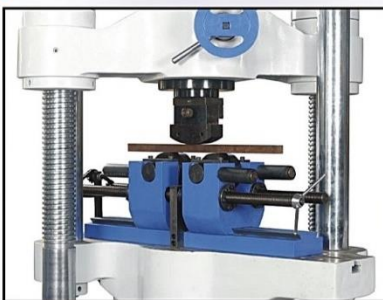


### **Bare attachment**

1 Set of 8 split bushes with springs for Dia 6, 8, 10, 12, 14, 16, 18 & 20 mm for shouldered specimen (size in mm)

1 Set of 6 threaded bushes for M 6, M 8, M 12, M 14, M 18 & M 20 for threaded specimen

### **Bend Re-bend test attachment**



Bend Re-bend test attachment as per BS 4449 - 1997 for Bar upto 40 mm dia bending tools of dia 16, 20, 24, 32, 40, 50, 60, 64, 80, 140, 175, 240, 280 & 320 mm



**180° Bend Test attachment**